

# E44 Excenter

## Contents

PDF created on: 01.09.2024 02:47



### E44 Excenter

Stromlaufplan  
Diagramme électrique  
Wiring diagram  
**B 6**

Zubehör - Laugentank  
Accessoires - réservoir à lessive  
Accessoires - solution tank  
**719.000**

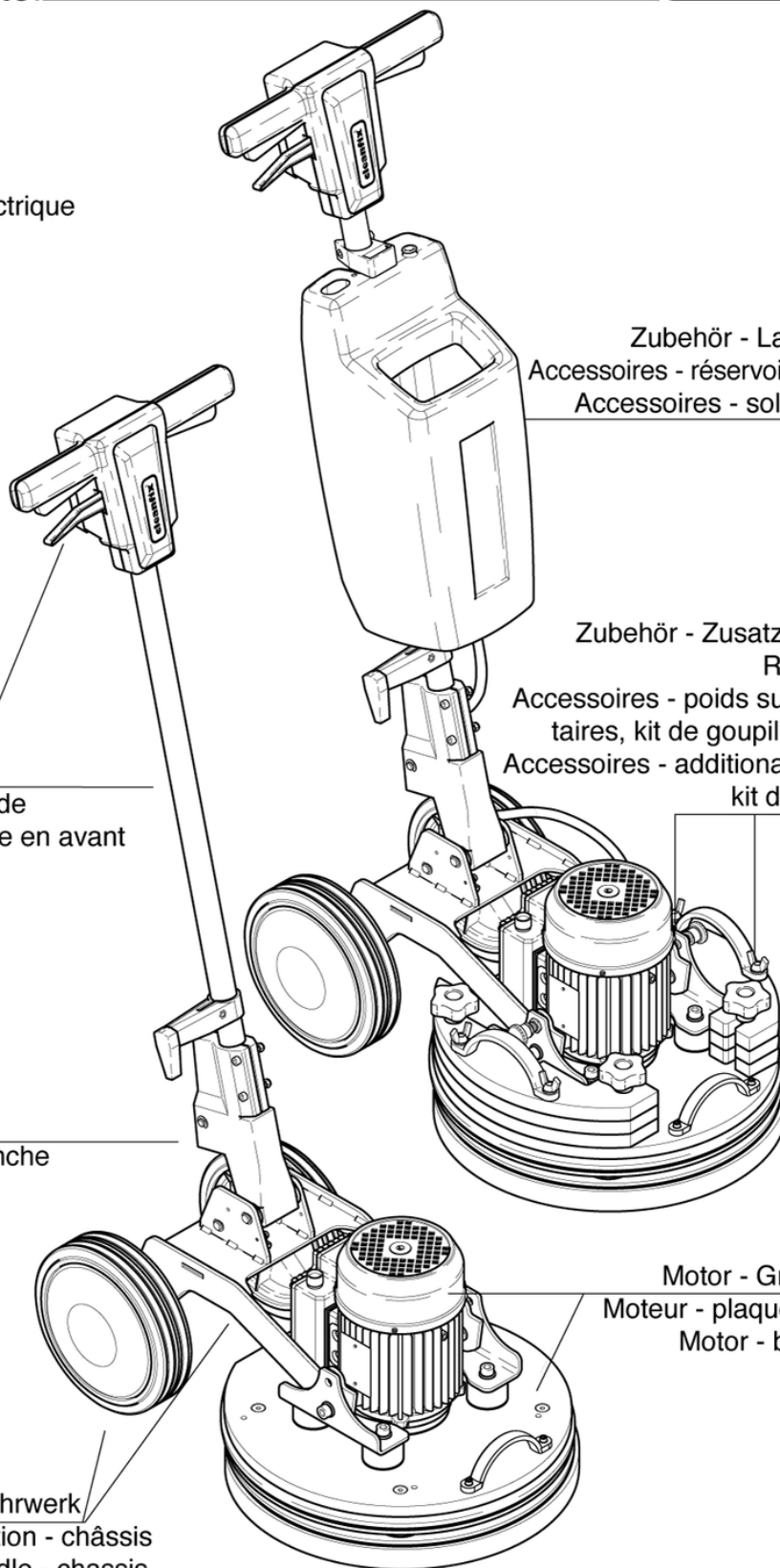
Stieloberteil  
Top part front side  
Partie supérieure en avant  
**B 4**

Zubehör - Zusatzgewichte,  
Rastbolzen  
Accessoires - poids supplémen-  
taires, kit de goupilles d'arrêt  
Accessoires - additional weights,  
kit detent pins  
**B 5**

Stielversteller  
Règlage du manche  
Shaft adjuster  
**B 3**

Motor - Grundplatte  
Moteur - plaque de base  
Motor - base plate  
**B 2**

Anbau Griff - Fahrwerk  
Poignée de fixation - châssis  
Attachment handle - chassis  
**B 1**



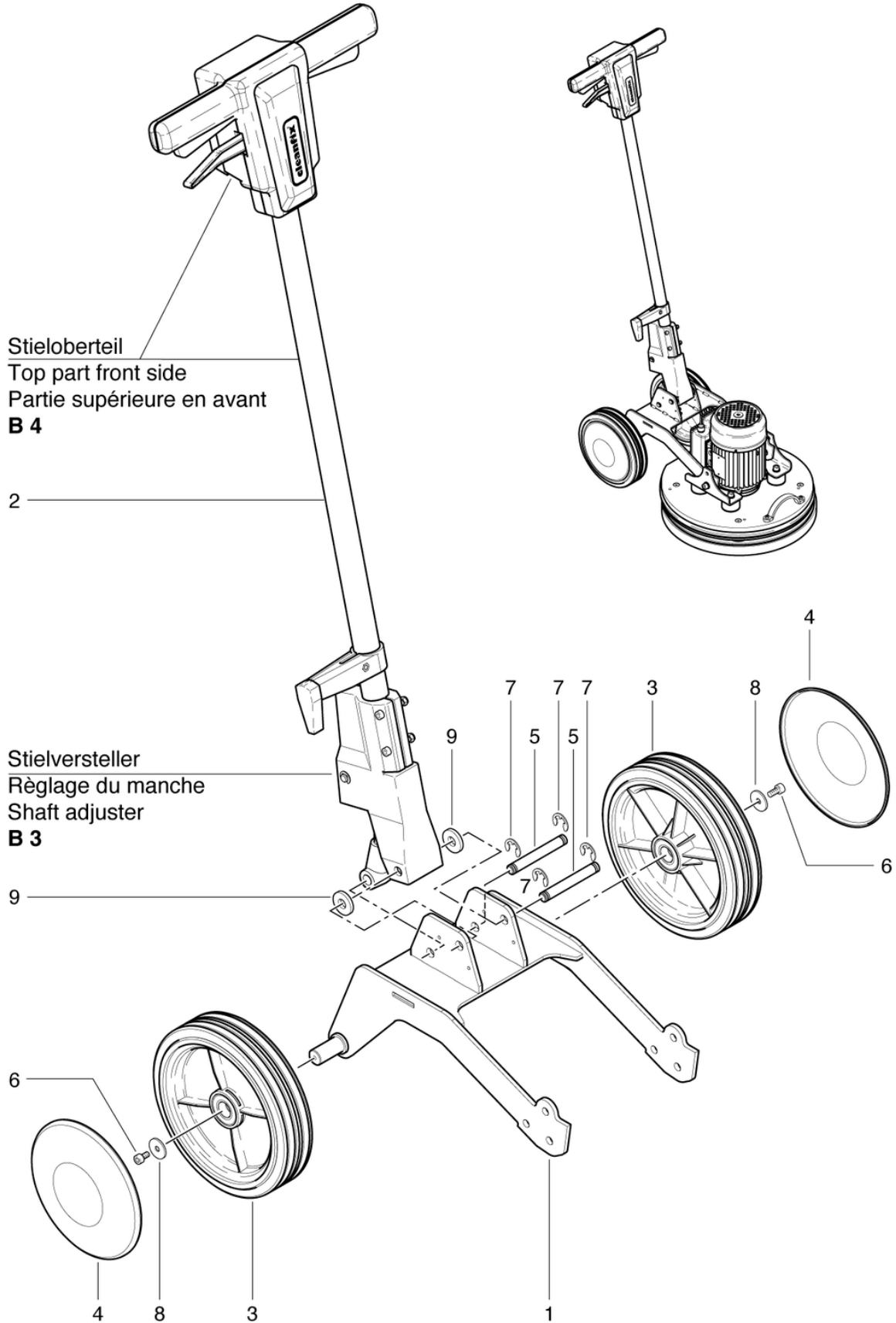
# E44 Excenter

## Attachment handle - chassis

PDF created on: 01.09.2024 02:47



E44 Excenter



# E44 Excenter

## Attachment handle - chassis

PDF created on: 01.09.2024 02:47

| <b>Pos.</b> | <b>Item no.</b> | <b>Spare part</b>                  |
|-------------|-----------------|------------------------------------|
| 1           | 750.553         | Handle connection welded           |
| 2           | P700            | Stem cpl.                          |
| 3           | 530.240         | wheel ø226 x 53 including bearings |
| 4           | 530.242         | Wheel Cover Red                    |
| 5           | 750.548         | Axle                               |
| 6           | P486Q           | Screw DIN 912 M6 x 12 A2           |
| 7           | P499Q           | Shim DIN 6799 8/16,3/1             |
| 8           | P510L           | Washer DIN 522 M6 6,4/25/1,5 A2    |
| 9           | 750.547         | Spacer sleeve                      |

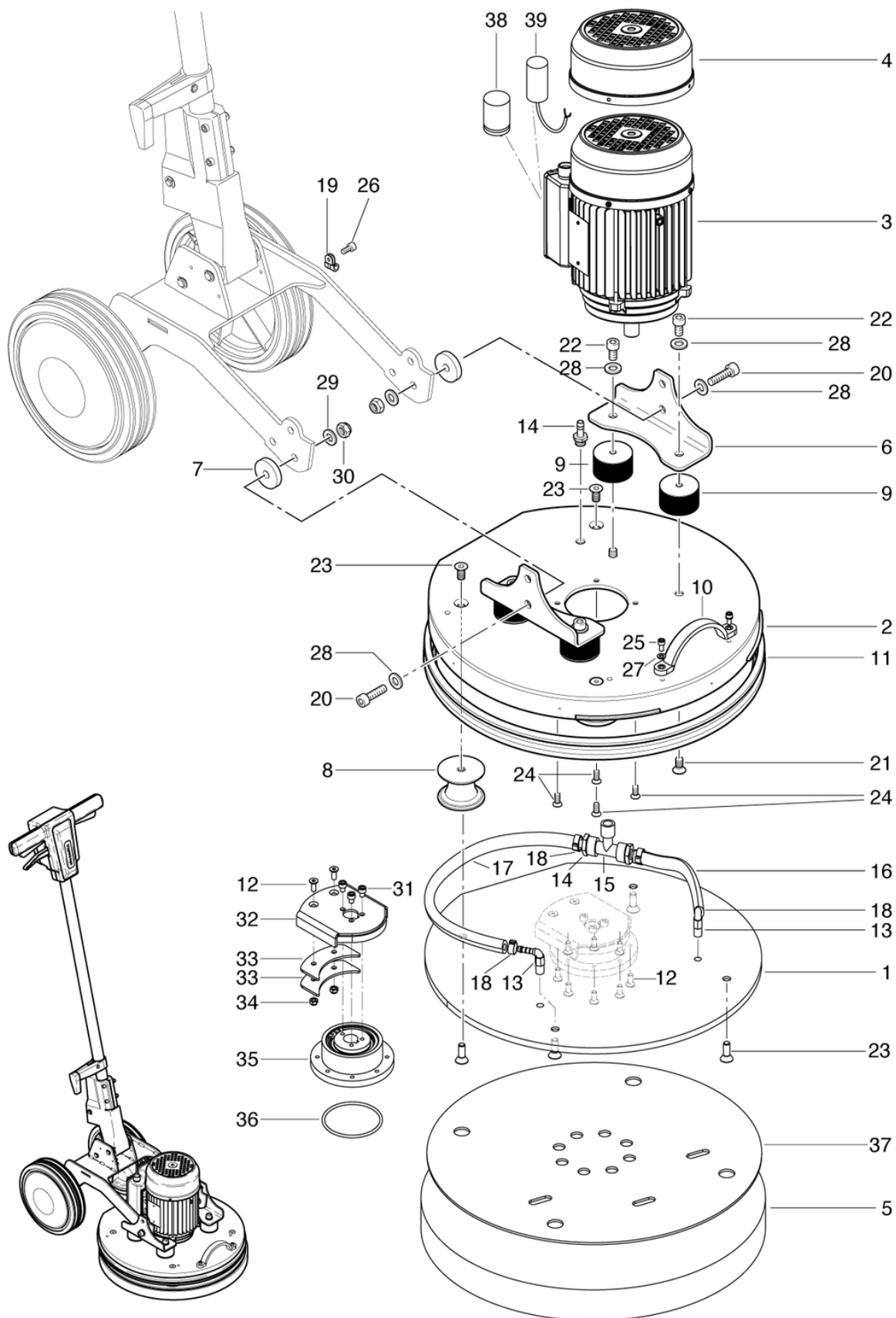
# E44 Excenter

## Motor - base plate

PDF created on: 01.09.2024 02:47



### E44 Excenter



# **E44 Excenter**

**Motor - base plate**

| Pos. | Item no.  | Spare part                                    |
|------|-----------|---|
| 1    | 750.535   | Base plate assy                               |
| 2    | 750.582   | Top plate welded                              |
| 3    | P220D     | Motor 230V / 1100W                            |
| 4    | 750.591   | Covering cap red                              |
| 5    | 694.322.5 | Standard Pad, red, Ø 432mm, 17 (5 pcs.)       |
| 6    | 750.516   | Handle connection                             |
| 7    | 750.583   | Spacer sleeve                                 |
| 8    | P172I     |   |
| 9    | P172D     | Round buffer M10 x 10, ø40 x 40mm 40° Sh A ±5 |
| 10   | P173I     | Bow handle                                    |
| 11   | 750.538   | Buffer  |
| 12   | P487W     | Screw DIN 7991 M6 x 16 A2                     |
| 13   | P541R     | Elbow nipple WES 6 / R1 / 8                   |
| 14   | 028.224E  | Hose Connection Nipple                        |
| 15   | P544F     | T-piece 1/4"-1/4"-1/4"                        |
| 16   | 750.531   | Hose left                                     |
| 17   | 750.557   | Hose right                                    |
| 18   | P550L     | Hose clamp 011.8-505R                         |
| 19   | P209H     | Pipe clamp DIN 3016 ø12mm                     |
| 20   | P487HA    | Screw DIN 912 M10 x 35 A2                     |
| 21   | P480D     | Screw DIN 7991 M10 x 16                       |
| 22   | P487G     | Screw ISO 4762 M10 x 16                       |
| 23   | P480Q     | Screw DIN 7991 M8 x 16 A2                     |
| 25   | P486QA    | Screw DIN 912 M6 x 14 A2                      |
| 26   | P489E     | Screw DIN 912 M5 x 10 A2                      |
| 27   | P500V     | Washer ISO 7092- M6 6,4/10,57/1,6 A2          |
| 28   | P496T     | Shim DIN 125 A M10 10,5/20/2                  |
| 29   | P510A     | Shim DIN 125 A M10 10,5/20/2 PA6.6            |
| 30   | P492Q     | Nut DIN 985 M10                               |
| 31   | P486YD    | Screw DIN 912 M6 x 8 A2                       |
| 32   | 750.576   | Driving plate                                 |
| 33   | 750.577   | Counterbalance                                |
| 34   | P492K     | Nut DIN 985 M6 A2                             |
| 35   | 750.593   | Excentric bearing assy                        |
| 36   | P809C     | Ring ISO DIN 3601 72.62/3.53-N-NBR 70         |
| 37   | 750.565   | Velcro plate                                  |
| 38   | P385R     | Operating Capacitor 31.5uF                    |
| 39   | P385Q     | Run Capacitor 50uF                            |

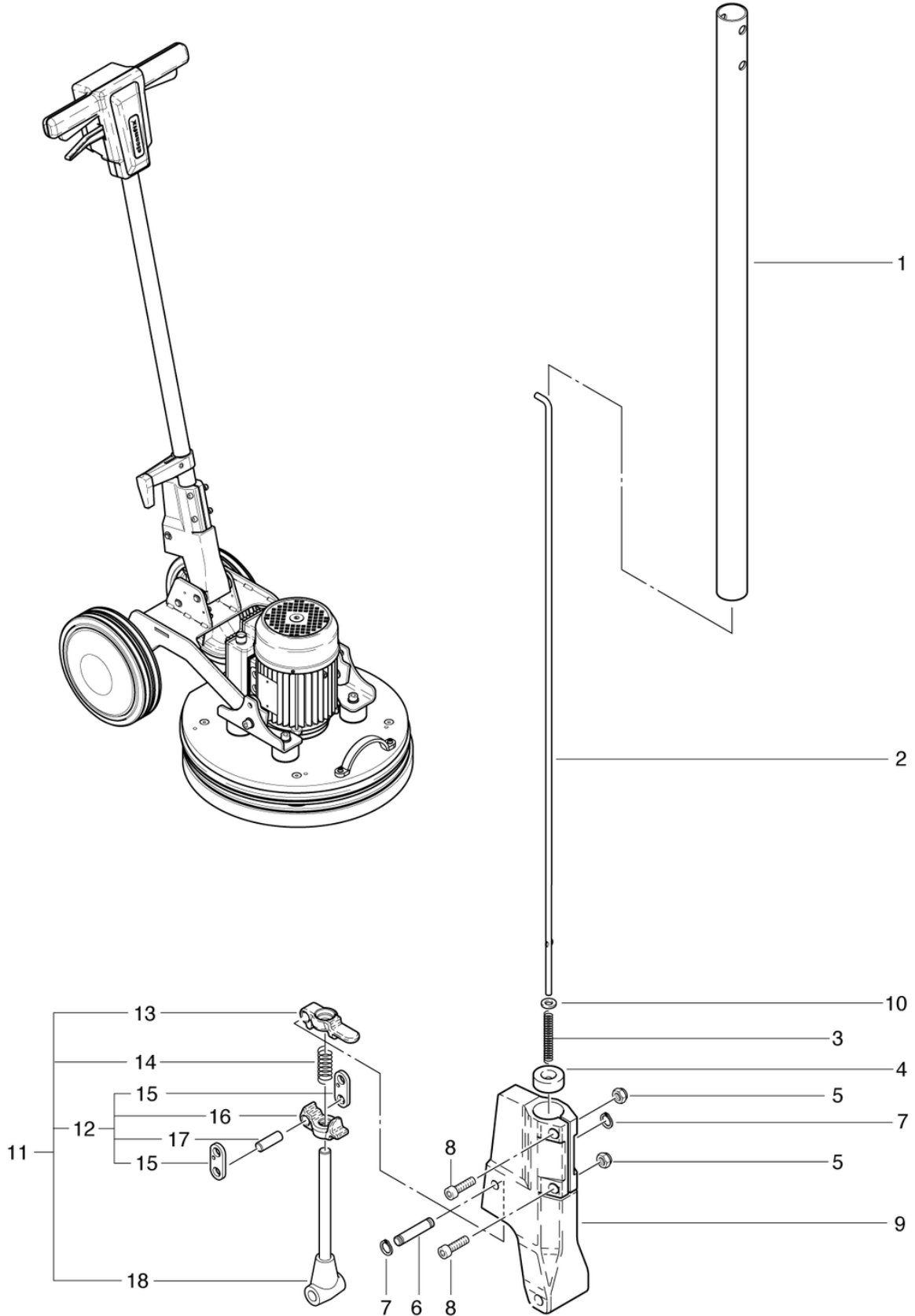
# E44 Excenter

## Shaft adjuster

PDF created on: 01.09.2024 02:47



E44 Excenter



# E44 Excenter

## Shaft adjuster

PDF created on: 01.09.2024 02:47

| Pos. | Item no.  | Spare part                                |
|------|-----------|---|
| 1    | 742.410L  | Shaft Tube                                |
| 2    | 742.212L  | Drawbar L = 863mm                         |
| 3    | 634711031 | Compression spring 1 / 6.2 / 55           |
| 4    | 623711022 | Guide Sleeve                              |
| 5    | P493K     | Nut DIN 985 M6                            |
| 6    | 672711018 | Axle                                      |
| 7    | P499Q     | Shim DIN 6799 8/16,3/1                    |
| 8    | P486G     | Screw DIN 7984 M6 x 25 galvanized         |
| 9    | 742.260   | Handle adjustment unit light gray RAL7035 |
| 10   | P496K     | Shim DIN 125 A M6 6,4/12/1,6              |
| 11   | 2711133   | Handle adjuster cpl.                      |
| 12   | 741.280   | Adjuster short cpl.                       |
| 13   | 3711236   | Adjustment piece long                     |
| 14   | 634711020 | Compression spring 2 / 12,2 / 37          |
| 15   | 4711014   | Holder                                    |
| 16   | 3711237   | Adjustment piece short                    |
| 17   | 672711019 | Axle                                      |
| 18   | 741.270   | Adjusting rod 177mm cpl.                  |



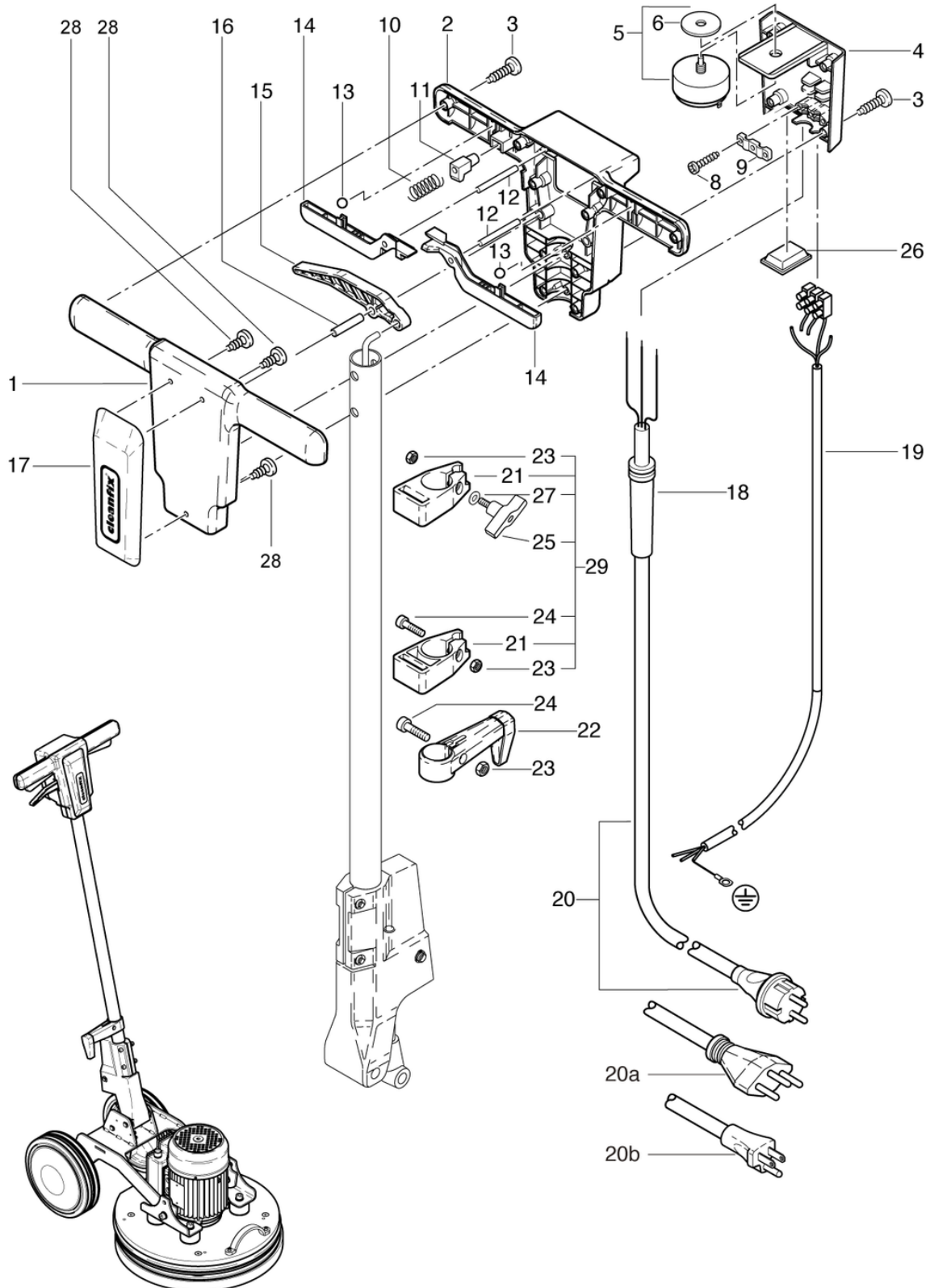
# E44 Excenter

## Top part front side

PDF created on: 01.09.2024 02:47



### E44 Excenter



# E44 Excenter

## Top part front side

PDF created on: 01.09.2024 02:47

| Pos. | Item no.  | Spare part  |
|------|-----------|---|
| 1    | 741.201   | Front Cover Handle                                  |
| 2    | 741.202   | Upper part of handle at the back anthracite gray    |
| 3    | P515L     | Screw WN 1452 K50 x 25 A2                           |
| 4    | 741.310   | Rear Handle Cover                                   |
| 5    | 6650454   | Switch  |
| 6    | P496      | Shim DIN 9021 M12 13/37/3                           |
| 10   | 742.209   | Compression spring VD-090L 0.55 / 6 / 29.2          |
| 11   | 742.208   | Button grey anthrazite                              |
| 12   | P512M     | Pin ISO 2338 6 x 50 pc vz                           |
| 13   | 6440641   | Ball DIN 5401 8                                     |
| 14   | 741.204   | Switch  |
| 15   | 741.207   | Shaft Adj Lever                                     |
| 16   | P512P     | Pin ISO 2338 8 x 40 pc vz                           |
| 17   | 741.208   | Screen, red   |
| 18   | 660011014 | R53-1100 Cable Sleeve                               |
| 19   | 750.312   | Stalk cable with Kl. 3 x 1.5mm <sup>2</sup>         |
| 20a  | P287G     | Mains cable SEV 3 x 1.5mm <sup>2</sup> , 12.5m IP55 |
| 20b  | P289D     | Mains cable GB 3 x 1.5mm <sup>2</sup> , 15m, gray   |
| 20   | 656711039 | Mains cable VDE 3 x 1.5mm <sup>2</sup> , 12.5m gray |
| 21   | 4711231   | Solution Tank Holder                                |
| 22   | 3711029   | Cable holder CL cpl.                                |
| 23   | P490D     | Nut DIN 934 M6                                      |
| 24   | P486T     | Screw DIN 912 M6 x 25                               |
| 25   | P253X     | Wing nut Ø48 M6x25                                  |
| 26   | 741.216   | Switch Handle                                       |
| 27   | P496K     | Shim DIN 125 A M6 6,4/12/1,6                        |
| 28   | P516V     | Screw WN 1452 KA25 x 10                             |
| 29   | 4711232   | Solution tank holder set                            |

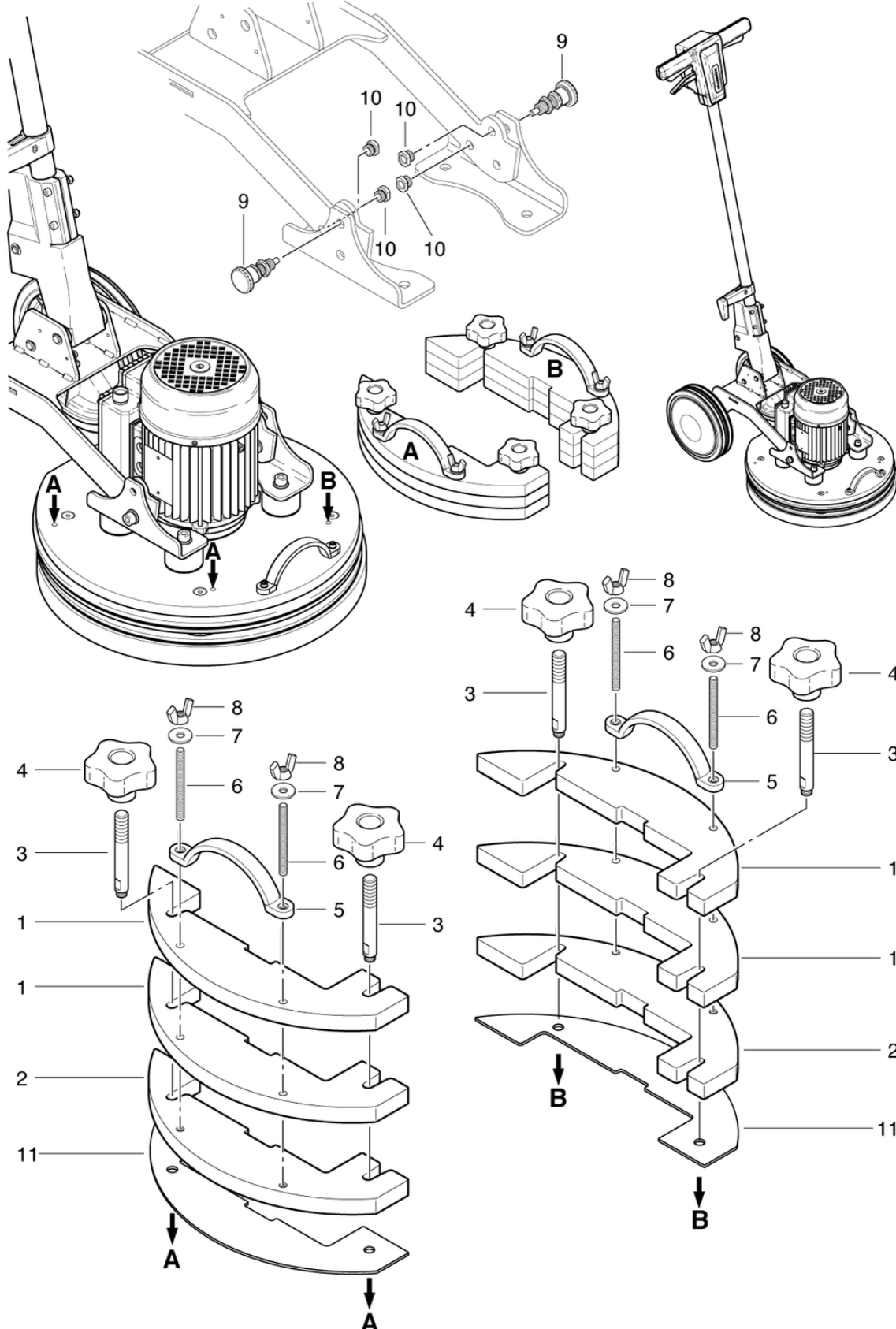
# E44 Excenter

## Accessories - additional weights, kit detent pins

PDF created on: 01.09.2024 02:47



### E44 Excenter



# E44 Excenter

## Accessories - additional weights, kit detent pins

PDF created on: 01.09.2024 02:47

| Pos. | Item no. | Spare part                                     |
|------|----------|--|
| 1    | 750.578  | Weight w/o threat                              |
| 2    | 750.579  | Weight with threat                             |
| 3    | 750.584  | Threaded pin M10                               |
| 4    | P253N    |  |
| 5    | P173I    | Bow handle                                     |
| 6    | 565.408  | Thread bar                                     |
| 7    | P497H    | Washer DIN 9021 M6 6,4/18/1,6 A2               |
| 8    | P253L    | Wing nut Ø34 M6 through thread                 |
| 9    | P171E    | Indexing plunger with lock nuts M12 x 1.5 x 35 |
| 10   | 750.569  | Threaded bushing                               |
| 11   | 750.599  | Plastic base round                             |

# E44 Excenter

## Wiring diagram

PDF created on: 01.09.2024 02:47



E44 Excenter

