

# R44-450 Spray

## Table contents

PDF created on: 27.07.2024 22:21



### R 44-450 Spray

Stieloberteil  
Partie supérieure en avant  
Top part front side  
**B 5 / ST 5**

Stromlaufplan  
Diagramme électrique  
Wiring diagram  
**B 7 / ST 7**

Stielversteller  
Règlage du manche  
Shaft adjuster  
**B 4 / ST 4**

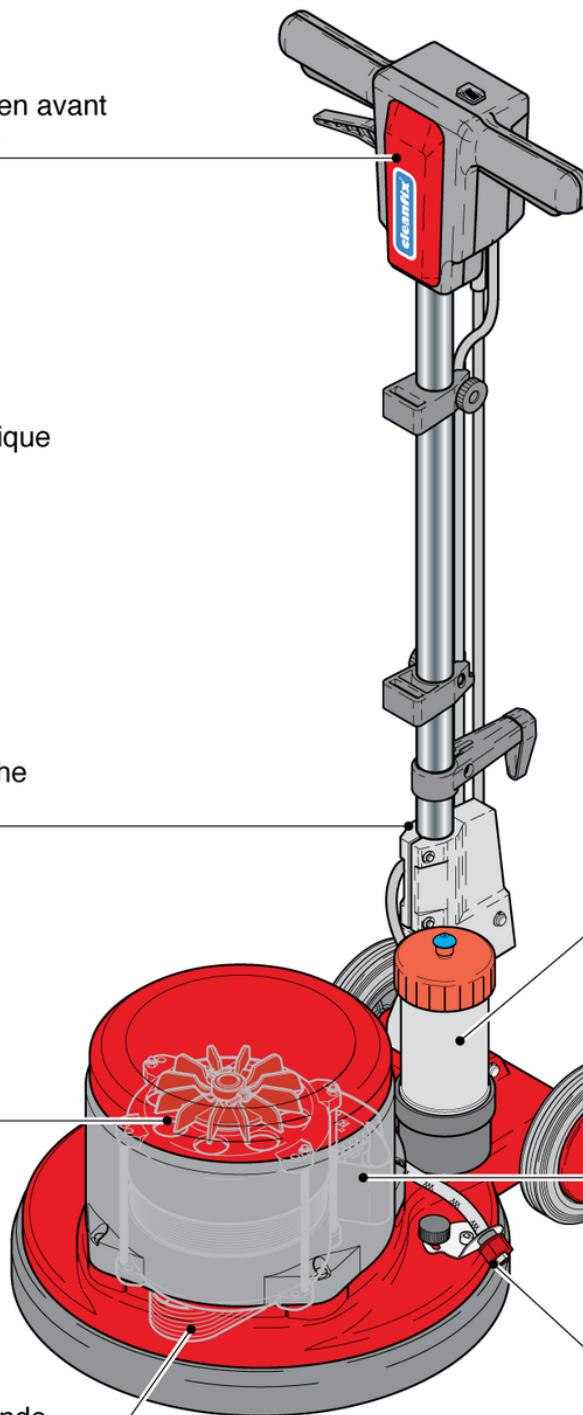
Motor  
Moteur  
**B 1 / ST 1**

Antriebssteile  
Pieces de commande  
Driving pieces  
**B 2 / ST 2** , bis Masch. Nr., à des appareils no.  
up to machine no.9212  
**B 2a / ST 2a** , ab Masch. Nr., à partir de appareils no.  
as from machine no. 9213

Sprühgerät  
Vaporisateur  
Spray unit  
**B 6 / ST 6**

Elektronik und  
Fahrwerk  
Electronique et  
train de transport  
Electronic and  
drive axle  
**B 3 / ST 3**

Sprühgerät  
Vaporisateur  
Spray unit  
**B 6 / ST 6**



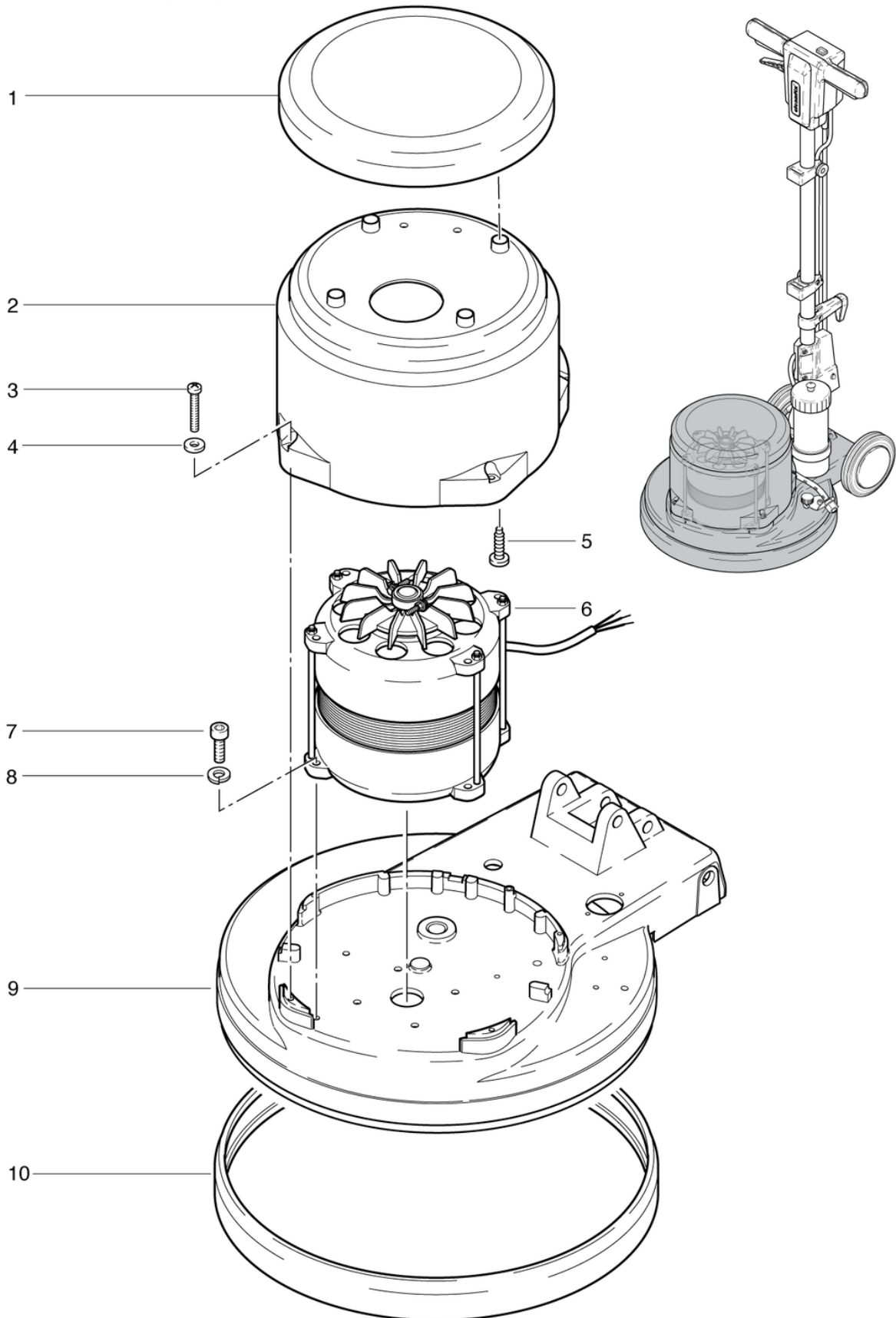
# R44-450 Spray

## Motor

PDF created on: 27.07.2024 22:21



R 44-450 Spray



# R44-450 Spray

## Motor

PDF created on: 27.07.2024 22:21

<b>Pos.</b>	<b>Item no.</b>	<b>Spare part</b>
1	741.067	Cover MD red CL
2	741.065	Motor Housing Red
3	P476I	Screw DIN 7985 M5 x 30
4	P497V	Shim DIN 7349 M5 5,3/15/2
5	P516P	Screw WN 1452 K40 x 12
6	752.121	Motor
7	P486T	Screw DIN 912 M6 x 25
8	P498U	Ring DIN 127 B M6 6,1/11,8/1,6 A2
9	790.095	Lower housing
10	741.054	Anthracite gray bump protection

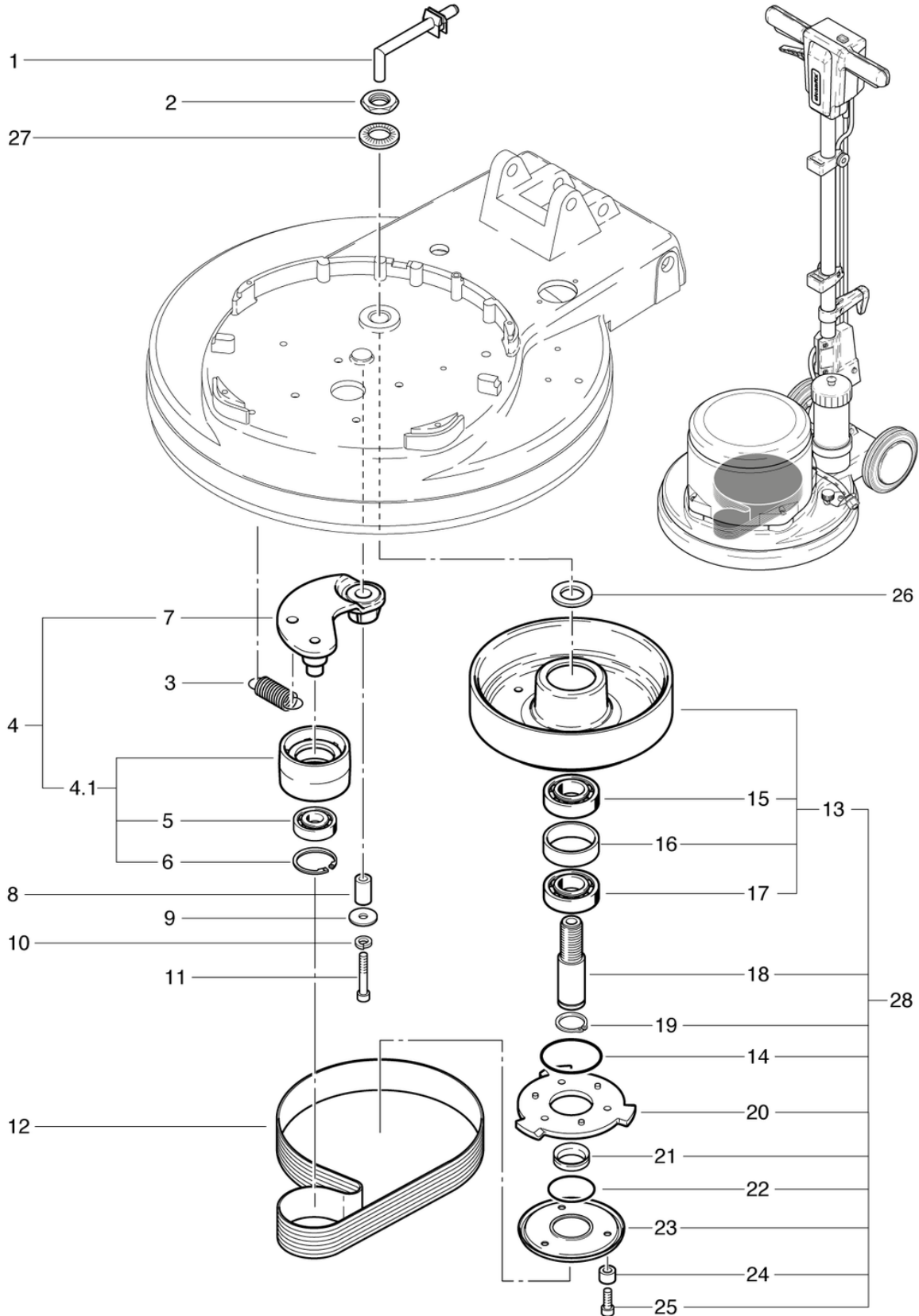
# R44-450 Spray

## Driving pieces Masch.Nr up 9212

PDF created on: 27.07.2024 22:21



### R 44-450/Duo Spray



# R44-450 Spray

## Driving pieces Masch.Nr up 9212

PDF created on: 27.07.2024 22:21

Pos.	Item no.	Spare part
1	742.064	Solution Tube R44-180
2	604611507	Nut
3	635611363	Mainspring 2.8 / 18.5 / 66
4	742.100	Belt Tension Pulley
05/01	742.116	Tension pulley $\varnothing$ 65.2 x 37 cpl.
5	P316O	Deep groove ball bearing 6302 2RSR $\varnothing$ 42 / 15 x 13
6	P513G	Ring DIN 472 42/1,75
7	742.133	Belt Tension Lever
8	742.135	Distance Ring
9	P496Q	Shim DIN 9021 M8 8,4/24/2
10	P498N	Ring DIN 127 B M8 8,1/14,8/2
11	P487T	Screw DIN 912 M8 x 45 A2 with schaft
12	6390520	Poly-V-belt 15-PJ-864mm Lw
13	742.130	Belt wheel Type 1
14	P964A	Ring DIN 3771 55,25/2,62 EPDM
15	P316P	Deep groove ball bearing 6205 2RS $\varnothing$ 52 / 25 x 15
16	3611851	Spacer ring $\varnothing$ 52 / 45 x 15
17	P316Q	Deep groove ball bearing 6003 2RSR $\varnothing$ 35 / 17 x 10
18	741.125	Main Axle
19	P513D	Ring DIN 471 25/1,2
20	742.141	Pad Hub
21	P344	Shaft sealing ring 25x40x3 EPDM/V2A
22	P964B	Ring DIN 3771 42,52/2,62 EPDM
23	742.128	Brush Support
24	742.129	Distance ring $\varnothing$ 8 / 6 x 4
25	P487S	Screw DIN 912 M6 x 20 A2
26	430.151	Washer 20 x 32 x 3mm
27	P498Q	Shim NFE 25511 M20 20,5/40/4,9
28	741.126	Belt wheel pre-mounts cpl. including Items 13-25

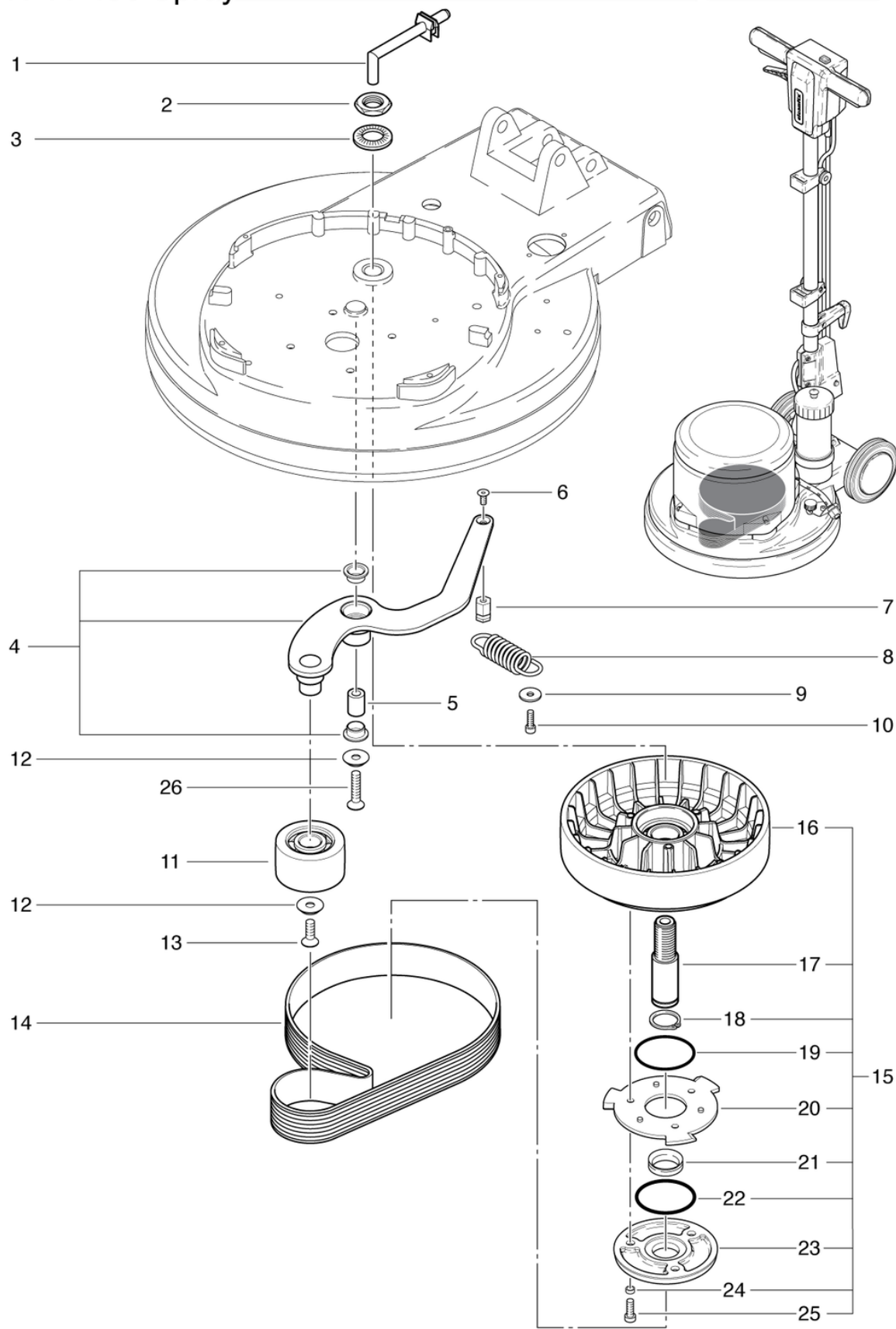
# R44-450 Spray

## Driving pieces from machine No. 9213

PDF created on: 27.07.2024 22:21



### R 44-450 Spray



# R44-450 Spray

## Driving pieces from machine No. 9213

PDF created on: 27.07.2024 22:21

Pos.	Item no.	Spare part
1	742.064	Solution Tube R44-180
2	604611507	Nut
3	P498Q	Shim NFE 25511 M20 20,5/40/4,9
4	726.302	Tension Pulley
5	739.135	Sleeve
6	P517GA	Screw ISO 14581 M5 x 12
7	726.303	holder
8	P511I	Tension spring RZ-177MI 3,6 / 25 / 59,4
10	P484O	Screw DIN7985 M5 x 10
11	742.116	Tension pulley $\varnothing$ 65.2 x 37 cpl.
12	P500T	Shim SN 213912 M8 25/4,8 A2
13	P480Q	Screw DIN 7991 M8 x 16 A2
14	6390520	Poly-V-belt 15-PJ-864mm Lw
15	741.127	Belt pulley pre-assembled
16	726.130	Belt pulley CL
17	741.125	Main Axle
18	P513D	Ring DIN 471 25/1,2
19	P964A	Ring DIN 3771 55,25/2,62 EPDM
20	742.141	Pad Hub
21	P344	Shaft sealing ring 25x40x3 EPDM/V2A
22	P964B	Ring DIN 3771 42,52/2,62 EPDM
23	742.128	Brush Support
24	742.129	Distance ring $\varnothing$ 8 / 6 x 4
25	P487S	Screw DIN 912 M6 x 20 A2
26	P487R	Screw DIN 7991 M8 x 35
P496Q	P496Q	Shim DIN 9021 M8 8,4/24/2

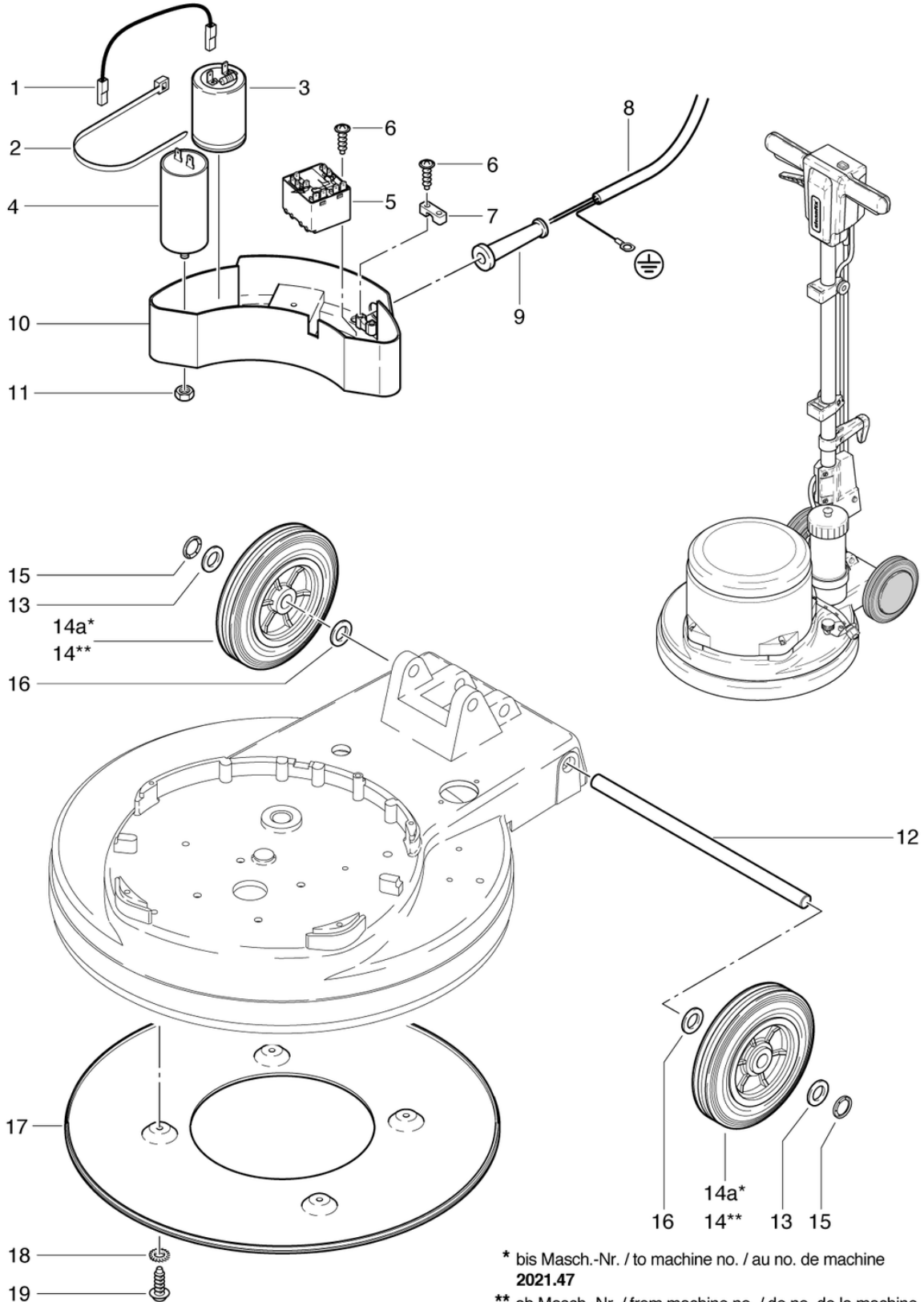
# R44-450 Spray

## Electronic and drive axle

PDF created on: 27.07.2024 22:21



### R 44-450 Spray



\* bis Masch.-Nr. / to machine no. / au no. de machine  
**2021.47**

\*\* ab Masch.-Nr. / from machine no. / de no. de la machine  
**2021.48**



# R44-450 Spray

## Electronic and drive axle

PDF created on: 27.07.2024 22:21

Pos.	Item no.	Spare part
1	742.331	Wiring black
2	P424	Cable tie black 4.8 x 300mm
3	752.328	Capacitor 125uf R44-180/450
4	P385J	Capacitor 25uF,450VAC
5	P350	Motor start relay
6	P515K	Screw M 5x20
7	4611085	Cable Clamp
8	790.356	Cable-tree
9	660011014	R53-1100 Cable Sleeve
10	741.315	Housing
11	P490E	Nut DIN 934 M8
12	752.040	Wheel Axle
13	P510	Shim DIN 988 16/28/0,5
14a	741.072A	Wheel ø160 x 40mm rework
14	741.072	Wheel ø160 x 40mm
15	P500H	Feather ring M8
16	P496Y	Shim DIN 125 M14 15/28/2,5
17	742.146	Ground
18	P498D	Washer DIN 6798 M5 5,1/9/0,5 A2
19	P483B	Sheet metal screw 4,8 x 13

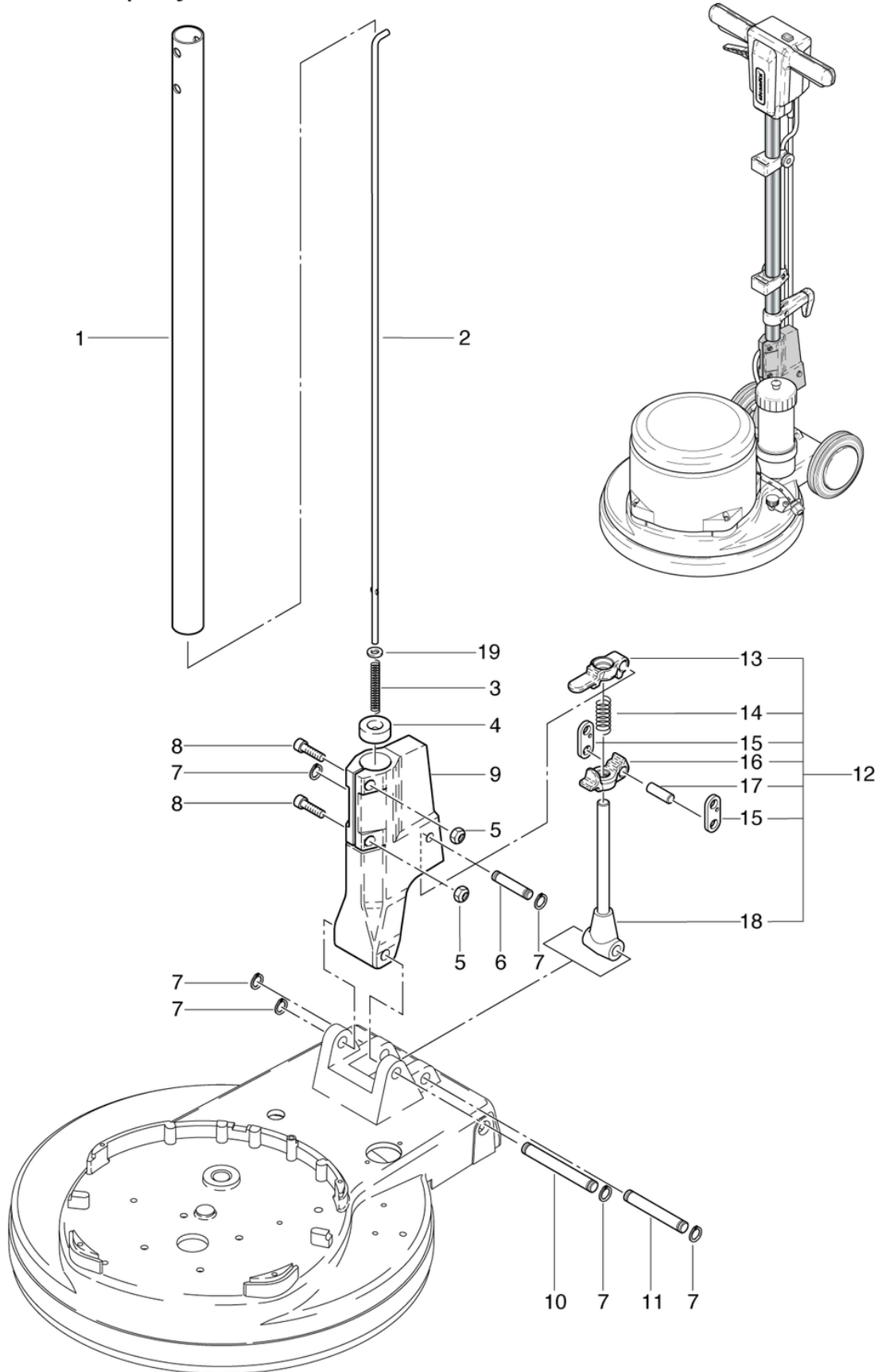
# R44-450 Spray

## Shaft adjuster

PDF created on: 27.07.2024 22:21



R 44-450 Spray



# R44-450 Spray

## Shaft adjuster

PDF created on: 27.07.2024 22:21

Pos.	Item no.	Spare part
1	742.410L	Shaft Tube
2	742.212L	Drawbar L = 863mm
3	634711031	Compression spring 1 / 6.2 / 55
4	623711022	Guide Sleeve
5	P490D	Nut DIN 934 M6
6	672711018	Axle
7	P499Q	Shim DIN 6799 8/16,3/1
8	P486T	Screw DIN 912 M6 x 25
9	742.260	Handle adjustment unit light gray RAL7035
10	672711016	Axis $\varnothing$ 12 x 99mm
11	672711017	Axis $\varnothing$ 12 x 82.2mm
12	2711133	Handle adjuster cpl.
13	3711236	Adjustment piece long
14	634711020	Compression spring 2 / 12,2 / 37
15	4711014	Holder
16	3711237	Adjustment piece short
17	672711019	Axle
18	741.270	Adjusting rod 177mm cpl.
19	P496K	Shim DIN 125 A M6 6,4/12/1,6

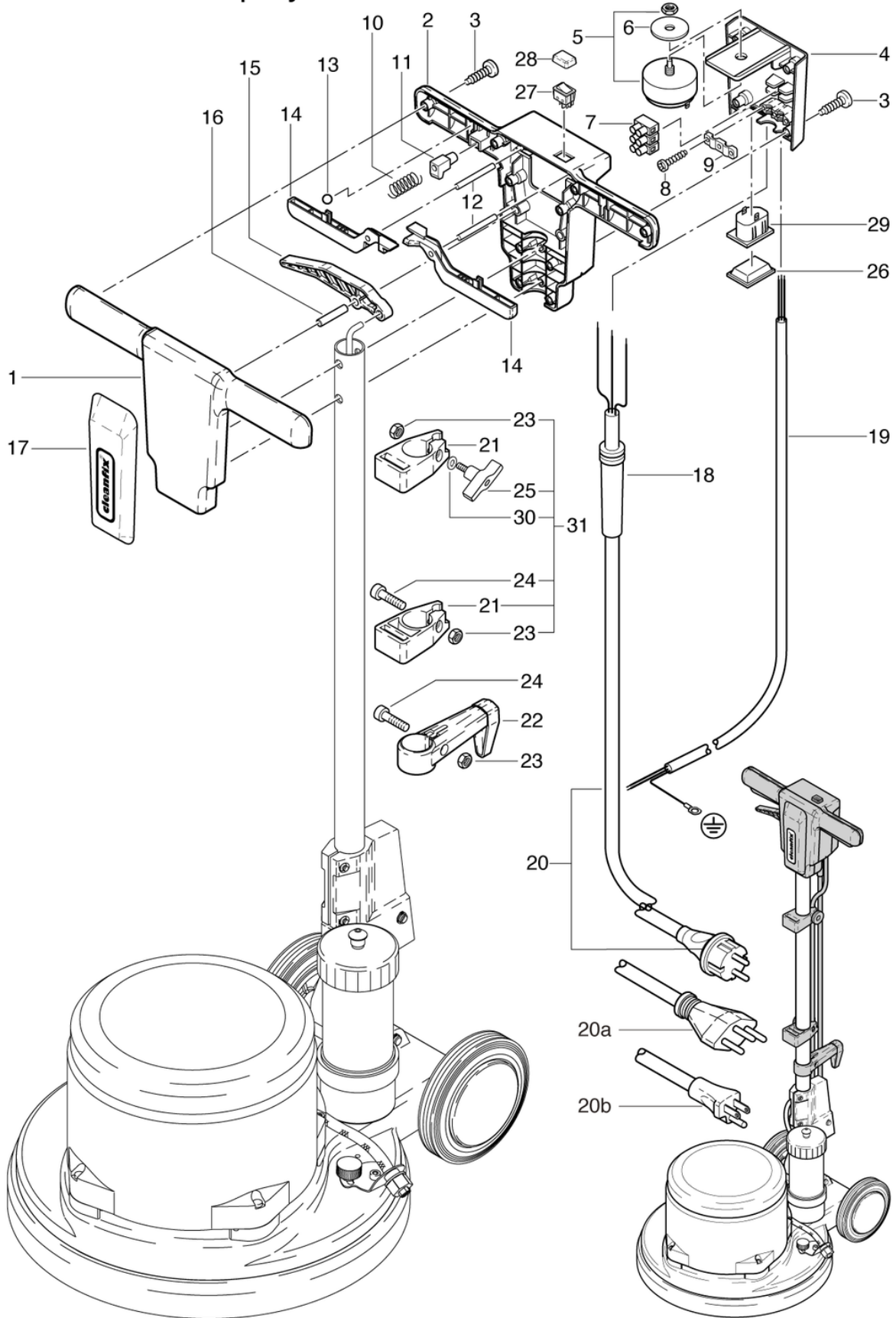
# R44-450 Spray

## Top part front side

PDF created on: 27.07.2024 22:21



### R 44-450/Duo Spray



# R44-450 Spray

## Top part front side

PDF created on: 27.07.2024 22:21

Pos.	Item no.	Spare part
1	741.201	Front Cover Handle
2	790.202	Top part back side
3	P515L	Screw WN 1452 K50 x 25 A2
4	741.310	Rear Handle Cover
5	6650454	Switch
6	P496	Shim DIN 9021 M12 13/37/3
7	P383N	Terminal block with DS, 3-pole, 6mm2
8	P5160	Screw WN 1452 K40 x 25
9	742.321	Cable clamp
10	742.209	Compression spring VD-090L 0.55 / 6 / 29.2
11	742.208	Button grey anthrazite
12	P512M	Pin ISO 2338 6 x 50 pc vz
13	6440641	Ball DIN 5401 8
14	741.204	Switch
15	741.207	Shaft Adj Lever
16	P512P	Pin ISO 2338 8 x 40 pc vz
17	741.208	Screen, red
18	660011014	R53-1100 Cable Sleeve
19	790.356	Cable-tree
20a	P287G	Mains cable SEV 3 x 1.5mm <sup>2</sup> , 12.5m IP55
20b	P289D	Mains cable GB 3 x 1.5mm <sup>2</sup> , 15m, gray
20	656711039	Mains cable VDE 3 x 1.5mm <sup>2</sup> , 12.5m gray
21	4711231	Solution Tank Holder
22	3711029	Cable holder CL cpl.
23	P490D	Nut DIN 934 M6
24	P486T	Screw DIN 912 M6 x 25
25	P253X	Wing nut Ø48 M6x25
26	741.216	Switch Handle
26	P380B	Device socket 2P + E
27	P236	Push-button
28	P237	Protection cap
30	P496K	Shim DIN 125 A M6 6,4/12/1,6
31	4711232	Solution tank holder set

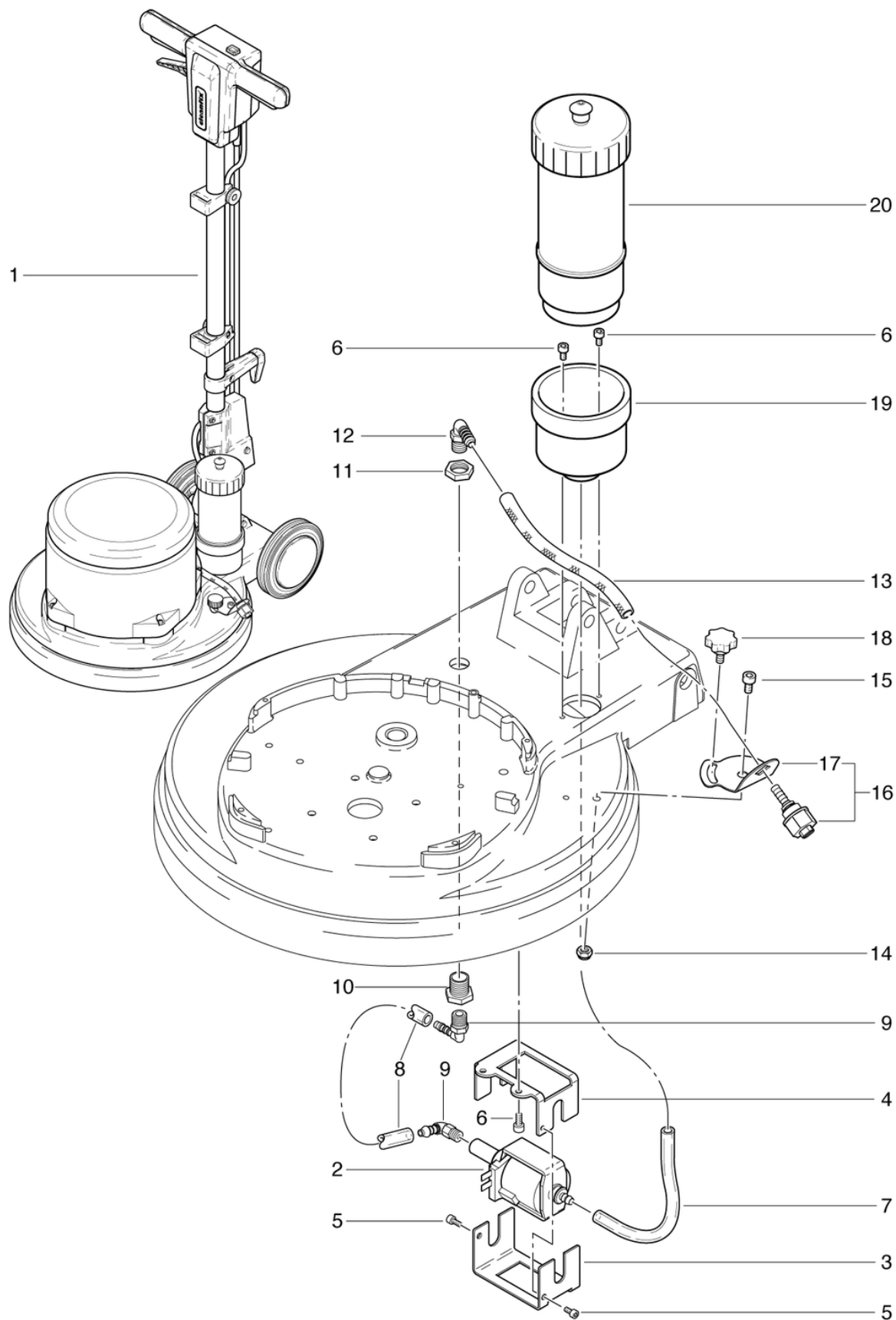
# R44-450 Spray

## Spray unit

PDF created on: 27.07.2024 22:21



R 44-450/Duo Spray



# R44-450 Spray

## Spray unit

PDF created on: 27.07.2024 22:21

<b>Pos.</b>	<b>Item no.</b>	<b>Spare part</b>
1	751.010	CLEANFIX R 44-450 Spray
2	P259	Pump electronic 230V/50Hz
3	790.362	Reinforcement piece
4	790.361	Reinforcement piece
5	P488D	Screw DIN 912 M4 x 8
6	P489E	Screw DIN 912 M5 x 10 A2
7	790.368	Connection hose 6x4x70
8	790.367	Connection hose 6x8x40
9	P541B	Elbow nipple WES 4 / R1 / 4
10	P535A	Hollow nipple 3/8 - 1/4 x 20 Ms
11	P535B	Nut 3/8 Ms
12	P541R	Elbow nipple WES 6 / R1 / 8
13	790.366	Connection hose 6x12x210
14	P493K	Nut DIN 985 M6
15	P486Q	Screw DIN 912 M6 x 12 A2
16	790.376	Spray nozzle compl.
17	790.363	Reinforcement piece
18	P253O	Star grip Ø32 M6 x 10
19	790.365	Holder for aerosol can
20	718.912	Floormac Solution Bottle

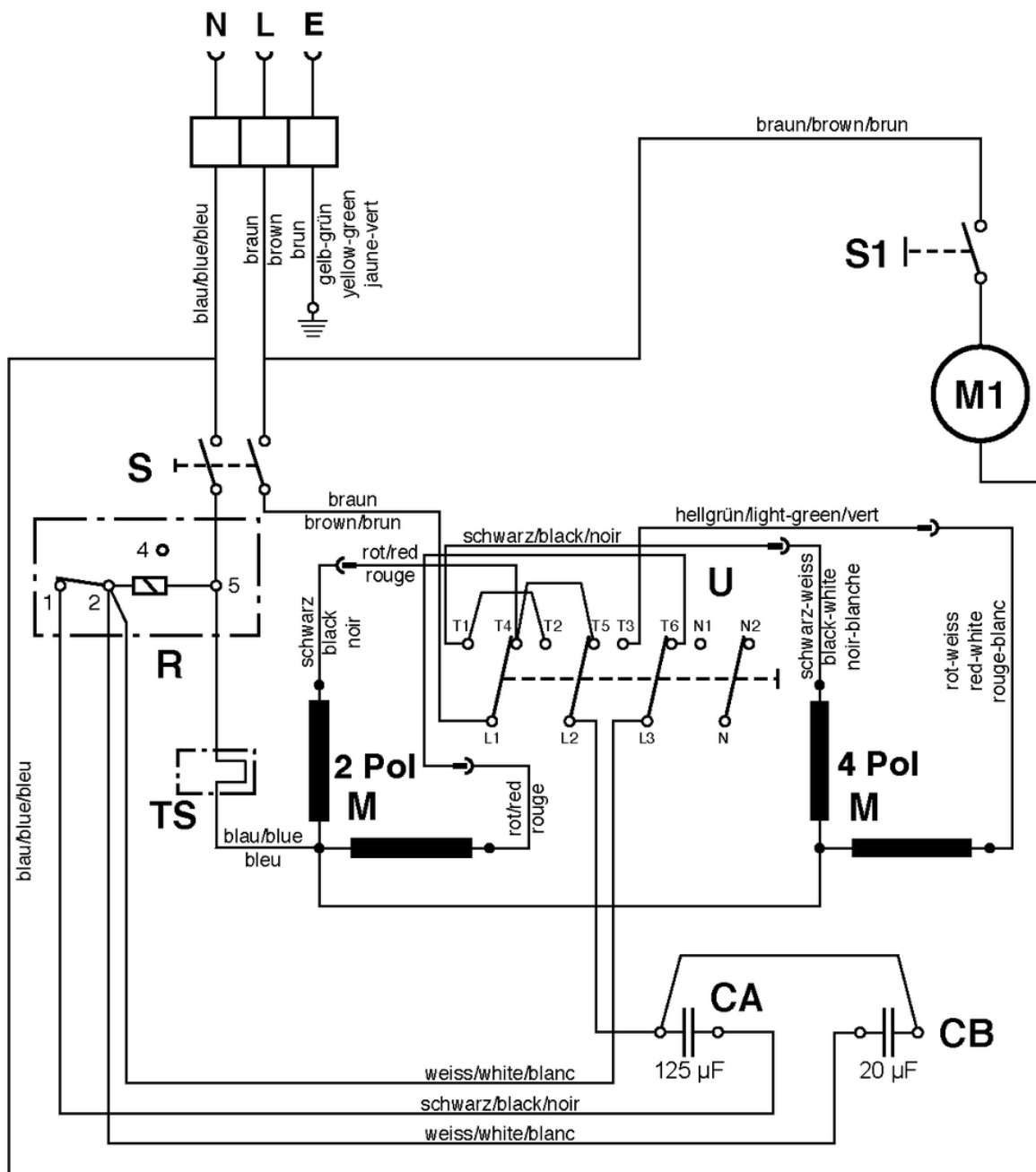
# R44-450 Spray

## Wiring diagram

PDF created on: 27.07.2024 22:21



### R 44-Duo Spray



- S = Schalter Bürstmotor / Tumbler switch for motor / Interrupteur pour moteur
- S1 = Schalter Pumpe / Tumbler switch for pump / Interrupteur pour pompe
- R = Startrelais / Relais / Relais de démarrage
- CA = Anlaufkondensator 125 µF / Capacitor 125 µF / Capaciteur 125 µF
- CB = Betriebskondensator 20 µF / Capacitor 20 µF / Capaciteur 20 µF
- M = Motor / Motor / Moteur
- TS = Thermoschalter
- M1 = Pumpe / Pump / Pompe
- U = Umschalter / Switch / Interrupteur